

# Quick Guide for MacViewer

## 1. Introduction

MacViewer is the remote monitoring software that allows user to view the video image from DVR on the Mac OS Computer. Version 10.5 or Higher

### Demo Site for MacViewer

**IP : <http://208.124.204.174>**

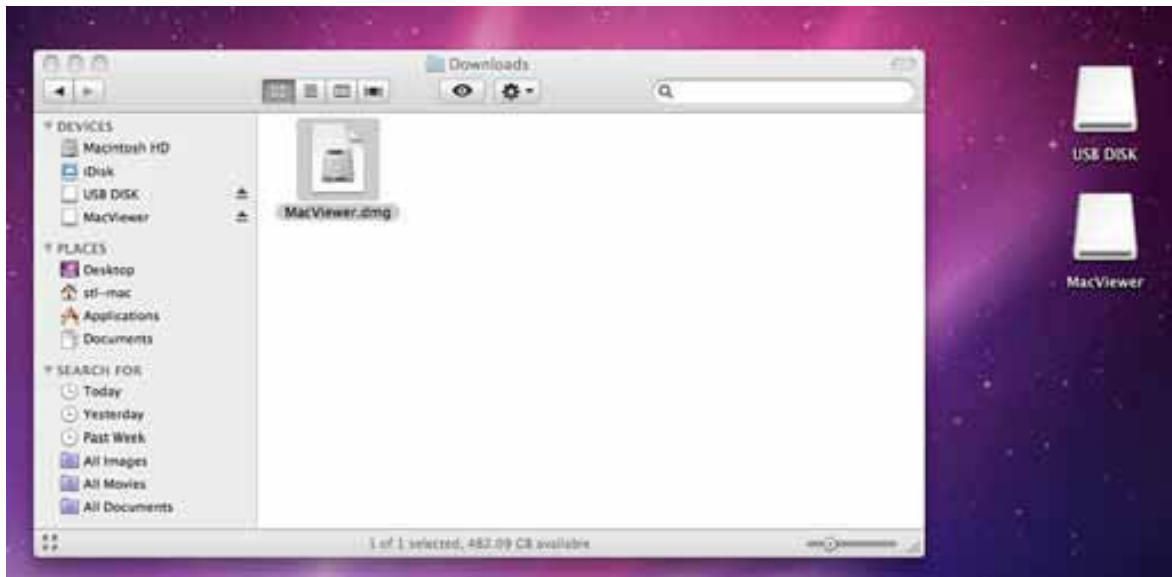
**ID & Password : admin & No password**

**TCP/IP Port : 9010**

**Web Port : 80**

## 2. MacViewer Installation

- 1) Copy "MacViewer.dmg" file to your Mac computer.
- 2) Double-click on this MacViewer.dmg file, then new icon [MacViewer] will appear on your desktop.

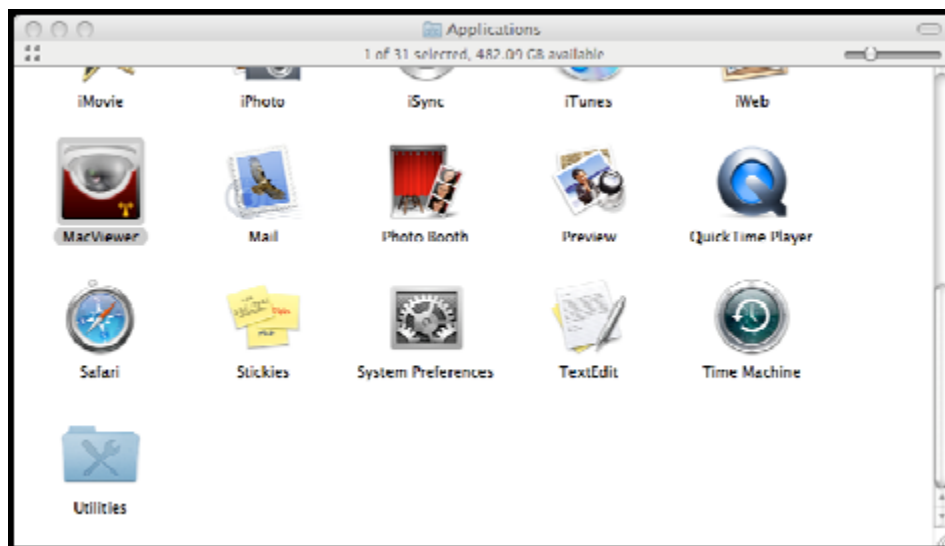


- 3) Double-click on this new icon [MacViewer], a Finder window will pop up



4) Drag the Mac Viewer to your application folder.

5) Open your Application folder, double-click [MacViewer] to run the software.



## 3. Connect to DVR

### 3.1 Site Registration

1) Click on [Site Reg] icon



2) Input DVR Name, IP, Port, User ID & Password, Channel, then click [Add]

Site Registration					
ID	Name	IP	Port	UserID	
1	DVR 1	192.168.0.165	9010	admin	

Name	DVR 1	<input type="button" value="Clear"/>  <input type="button" value="Add"/>  <input type="button" value="Modify"/>  <input type="button" value="Delete"/>
IP	192.168.0.165	
Port	9010	
User ID	admin	
User PWD	••••	
Channel Count	8	

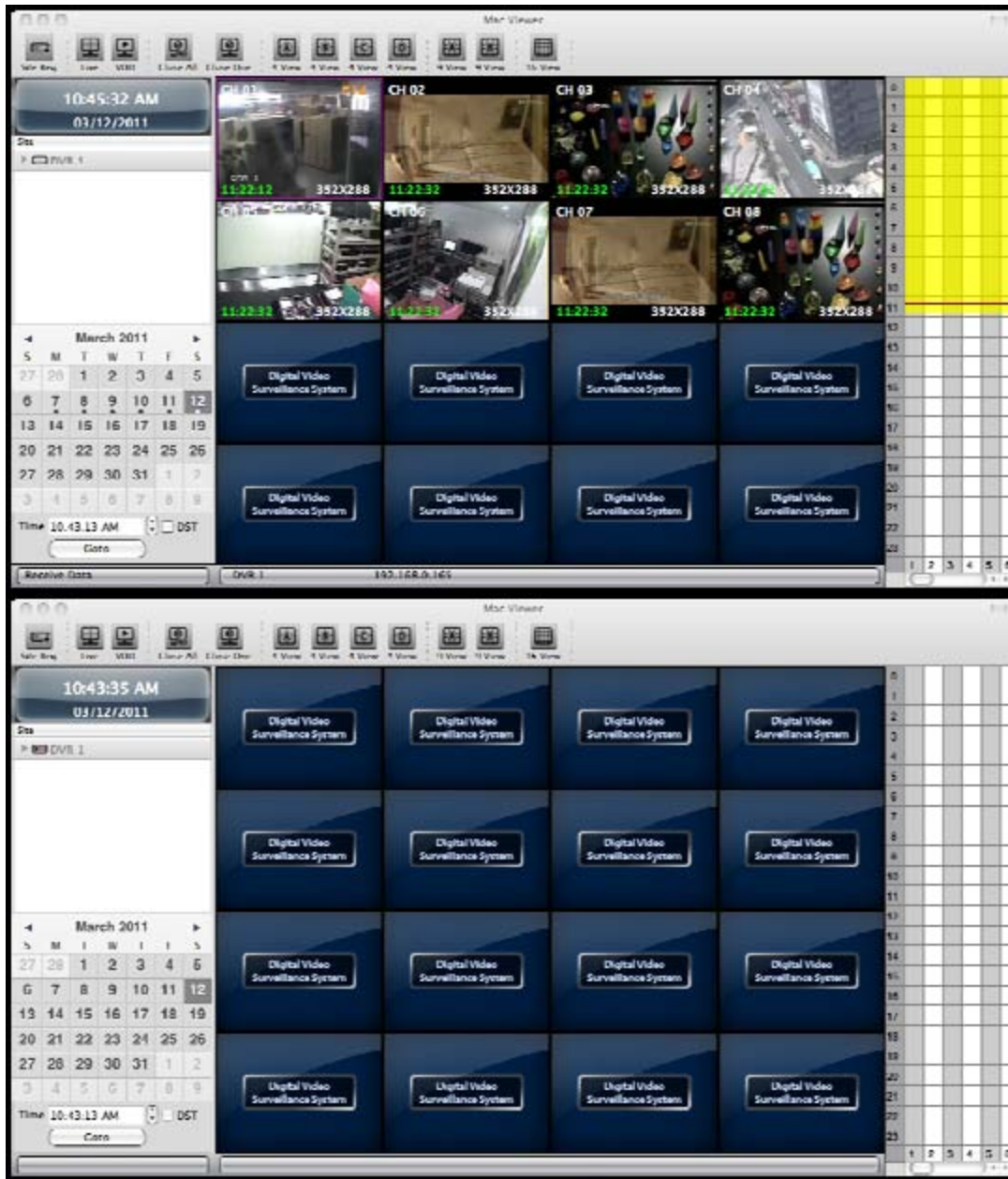
## 3.2 Live Connection

- 1) Select [Live] Mode from top menu.
- 2) Drag and drop the DVR from Site List to the channel windows



## 3.3 VOD Connection

- 1) Select [VOD] mode from top menu.
- 2) Drag and drop the DVR from Site List to the channel windows



>>>> End <<<<<<□\_